



**SOFT
LINE**

COSY CHAIR

WWW.BCILIBRARIES.COM



COSY



Wing chair
Art. no.: 2-289



Description:

A chair to suit any mood

COSY is a lounge chair with a special twist: You can use it as a low lounge chair or turn it into a cosy wing chair by lifting the back to a higher position. The high backrest creates a very intimate chair, and the low backrest has an open and social feel. COSY will suit any mood you are in. The base comes in full gloss stainless steel or white lacquer.

Year of design: 2012

Function:

The unique backrest can be placed in different heights.

From low to high position of the backrest is a difference in the height of 14 cm.

Features:

Unique function in the backrest.

Same chair can be used as lounge chair or as a wing chair.

A chair to suit any mood.

Elegant and sophisticated.

Inviting and soft.

Can be combined elegantly with many kinds of furniture.

Timeless.

Comfortable and high quality.

Many fabric qualities and colours provided.

A removable cover for cleaning or to be changed.

Design: Matthias Demacker

Matthias Demacker was born in southern Germany in 1970. He studied design at FH Niederrhein in Krefeld and at the same time worked with a number of different architects' studios on trade fair exhibition stands. After graduating, he moved to Munich, worked for a number of interior design studios and in 2003 set up his own. He has received many acknowledgements at an international level, such as the Interior Innovation Award, a nomination for the German Design Award (both in 2005), the Red Dot Award in 2007 and the Good Design Award in 2010.

His vision for design: 'make it special, but keep it simple'.

COSY

Dimensions (cm):

	Wing chair	
Art. No.:	2-289	
Length:	80	31.5"
Depth:	77	30.3"
Height:	87/100	34.3"/39.4"
Seat Height:	45	17.7"
Seat Depth:	47	18.5"
Colli:	1	1
Packing Dimensions:	83.5x83.5x93	33"x33"x36.6"
Volume:	0.65 m ³	
Weight (net):	36.77 kg	81 lbs
Weight (gross):	42.00 kg	92.6 lbs

Additional Information:

Packing

7 mm cardboard box and plastic foil 50 µm.

Cleaning

Brushing and vacuum-cleaning with daily cleaning.

A removable cover can be dry-cleaned and changed.

Upholstery

Arm- and backrest:

37 kg/m³ high elastic polyurethane cell foam with 100 g fibre.

Seat:

35 kg/m³ cold cure foam with 100 g fibre.

Polyurethane cell foam tested referring to Øko-tex 100.

Frame

Steel.

Legs

Tube: Ø 60 mm. Stainless Steel.

Base: Ø 55 cm. Stainless Steel.



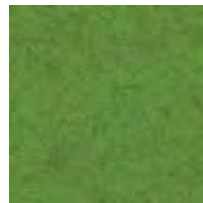
SOFTLINE SEATING

Felt Colors

WWW.BCILIBRARIES.COM



579



*848



*855



*847



624



588



622



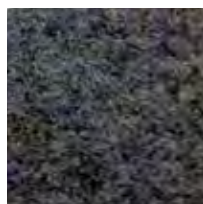
581



*858



582



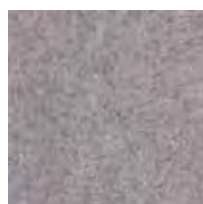
*846



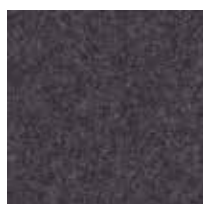
629



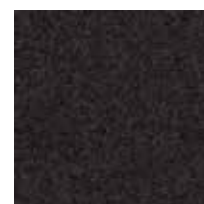
*859



*620



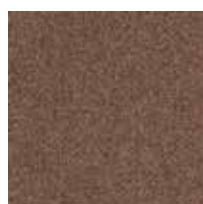
*623



*610



*619



*849



*635



636

Composition: 80% Wool, 20% Polyamide (* 70% Wool, 25% Polyamide, 3% Acrylic, 2% Polyester)

SOFTLINE SEATING

Valencia Colors

WWW.BCILIBRARIES.COM



258



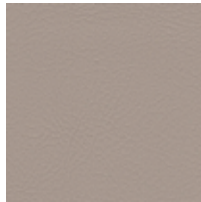
265



266



267



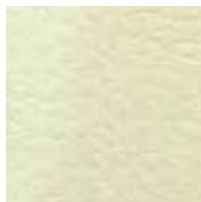
268



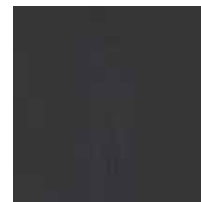
264



269



262



259

Composition: 100% Vinyl / Backing: 100% Polyester



COSY

WWW.BCILIBRARIES.COM

