

**SOFT
LINE**

CHAT POUF

WWW.BCILIBRARIES.COM



CHAT POUF



Pouf small
Art. no.: 2-238



Pouf large
Art. no.: 2-239

Description:

Be creative

This pouf works in all kinds of environments and in many different ways. Choose an eye-catching colour to make a statement or a natural shade for a simple and minimalistic look. The possibilities are endless, and it's up to you to be creative. The CHAT pouf is lightweight and easy to move and store.

Year of design: 2008

Unique and elegant. The pouf is uniquely adaptable to different locations. Whether it is at home, in the office lounge or even in public places like museums or concert hall foyers, the pouf adapts to the space and harmonises with the atmosphere. The distinctive design conveys its own signals and was created to provide a place to sit and enjoy chatting, which is why it came to be called "CHAT". This lightweight pouf is easily movable, which makes it possible to enjoy different layouts and arrangements by changing the location whenever you like.

Design: Hiromichi Konno

Japanese product designer Hiromichi Konno has worked as an assistant designer for Ross Lovegrove for three years.

In 2002, he went independent, initially based in London in the UK.

Konno has now been based in his homeland, Japan, since 2007 and is working on various international projects including furniture and home accessories.

CHAT POUF

Dimensions (cm):

	Pouf small		Pouf large	
Art. No.:	2-238		2-239	
Diameter:	100	(39.4")	140	(55.1")
Length:	90	(35.4")	130	(51.2")
Depth:	80	(31.5")	114	(44.9")
Height:	37	(14.6")	42	(16.5")
Colli:				
Packing Dimensions:	91x83.5x37 (35.8" x 32.9" x 14.6")		126x114x41.5 (49.6" x 44.9" x 16.3")	
Volume:	0.28 m ³		0.60 m ³	
Weight (net):	5.05 kg		16.56 kg	
Weight (gross):	5.65 kg	(12.46 lbs)	17.40 kg	(38.4 lbs)

Additional Information:

Cleaning

Brushing, vacuum-cleaning or dry-cleaning of the removable cover.

Covers in textile leather can be wiped with a damp cloth.

Upholstery

30 kg/m³ High elastic polyurethane cell-foam with 200 g fibre wrapping on the seat.

Edges : 25 kg/m³ polyurethane cell-foam.

Polyurethane cell-foam tested acc. to Ökotex 100.



 BCI



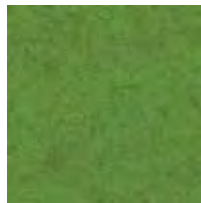
SOFTLINE SEATING

Felt Colors

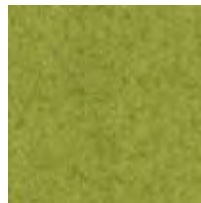
WWW.BCILIBRARIES.COM



579



*848



*855



*847



624



588



622



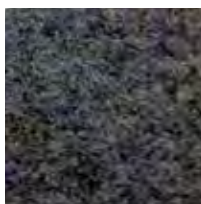
581



*858



582



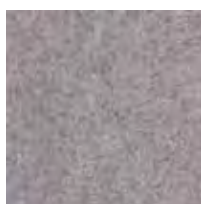
*846



629



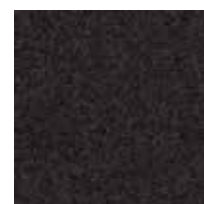
*859



*620



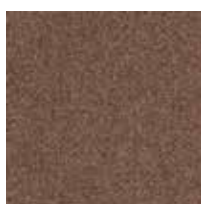
*623



*610



*619



*849



*635



636

Composition: 80% Wool, 20% Polyamide (* 70% Wool, 25% Polyamide, 3% Acrylic, 2% Polyester)

SOFTLINE SEATING

Valencia Colors

WWW.BCILIBRARIES.COM



258



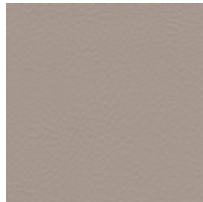
265



266



267



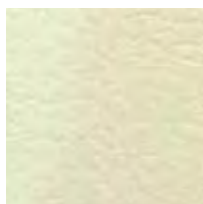
268



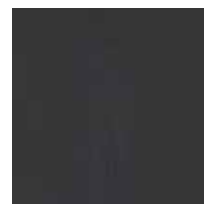
264



269



262



259

Composition: 100% Vinyl / Backing: 100% Polyester



CHAT POUF



www.bcilibraries.com
877 224 7026