



**SOFT
LINE**

FLUID CHAIR AND SOFA

WWW.BCILIBRARIES.COM



FLUID



Sofa
Art. no.: 2-630



Chair
Art. no.: 2-623

Description:

An invitation to relax

FLUID is a relaxing and comfortable sofa and chair based on the beanbag principle. It adapts to the person who sits in it, and it's incredibly relaxing. Light and comfy and available in materials for indoor and outdoor use.

Year of design: 2005

Function:

- Sit on the back or on the seat.
- Sit upright or chill out over the back.

Features:

- The ultimate casual sack chair and sofa.
- If you want to give yourself and your guests a different experience...
- The sofa and chair are built up as bean bags, which adjust individually to each user.
- Because of the low weight, it is easy to move around, and is perfect for anyone who loves change.
- High quality.

Design: busk+hertzog

Architects specialized in furniture / product design. The studio, today located in London UK, was established year 2000 by Flemming Busk (1967), architect MAA and designer MDD, and Stephan B. Hertzog (1969), designer MDD. busk+hertzog have received more than 40 international design awards for their works and their designs are a.o. represented at the Royal House of Norway, Danish Broadcast Cooperation, CNN, Chivas Regal, the Norwegian Embassy in Helsinki, the Carnegie Trust, and "The Modern" (Restaurant), Museum of Modern Art, New York.

Flemming Busk has worked with SOFTLINE since 1999, where he won our idea competition with his simple yet brilliant sofa bed SLEEP. Has also specially designed among other things the HELLO chair for the world famous pop star Kylie Minogue.

FLUID

Dimensions (cm):

	Sofa		Chair	
Art. No.:	2-630		2-623	
Length:	160	63"	95	37.4"
Depth:	105	41.3"	105	41.3"
Height:	65	25.6"	65	25.6"
Seat Height:	30	11.8"	30	11.8"
Seat Depth:	60	23.6"	60	23.6"
Colli:	1	1	1	1
Packing Dimensions:	150x91x58	59"x35.8"x22.8"	95x88x55	37.4"x34.7"x21.7"
Volume:	0.79 m ³		0.46 m ³	
Weight (net):	17.35 kg	38.25 lbs	10.63 kg	23.43 lbs
Weight (gross):	18.65 kg	41.1 lbs	11.35 kg	25 lbs

Additional Information:

Packing

Plastic foil 160 µm.

Assembly

Fully assembled

Cleaning

Brushing, vacuum-cleaning or a damp cloth.

Upholstery

The cover is with an in-sewn layer of polyurethane foam.

Filling is polystyrene beans.

Construction

The special construction of the cover means that FLUID will not collapse as traditional sack chairs do.



SOFTLINE SEATING

Felt Colors

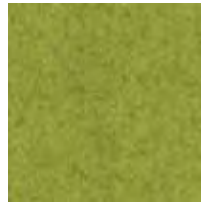
WWW.BCILIBRARIES.COM



579



*848



*855



*847



624



588



622



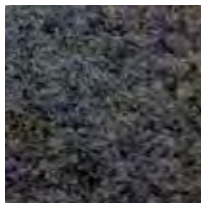
581



*858



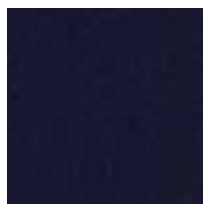
582



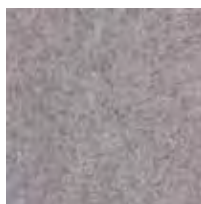
*846



629



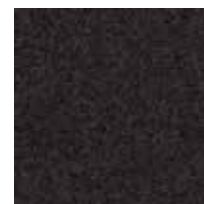
*859



*620



*623



*610



*619



*849



*635



636

Composition: 80% Wool, 20% Polyamide (* 70% Wool, 25% Polyamide, 3% Acrylic, 2% Polyester)

SOFTLINE SEATING

Valencia Colors

WWW.BCILIBRARIES.COM



258



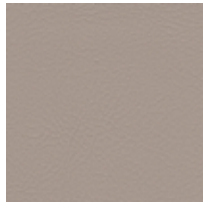
265



266



267



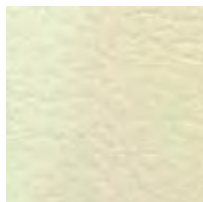
268



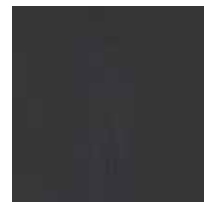
264



269



262



259

Composition: 100% Vinyl / Backing: 100% Polyester



FLUID CHAIR AND SOFA

WWW.BCILIBRARIES.COM

The comfort of a beanbag with a bit more structure and style.

FLUID



BCI

www.bcilibraries.com
877 224 7026